



# “Y” STRAINERS FORGED

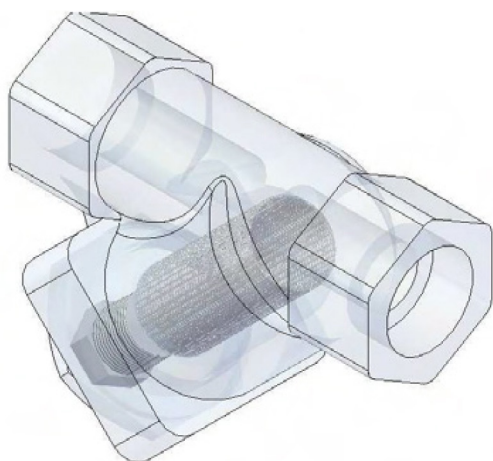
---

Our Y Forged Strainer section includes two different types of strainers.  
In the following sections you can visualize the characteristics of the desired strainer.

# FORGED STEEL "Y" PAP

## YSF800

Y-type strainer, forged, class 800



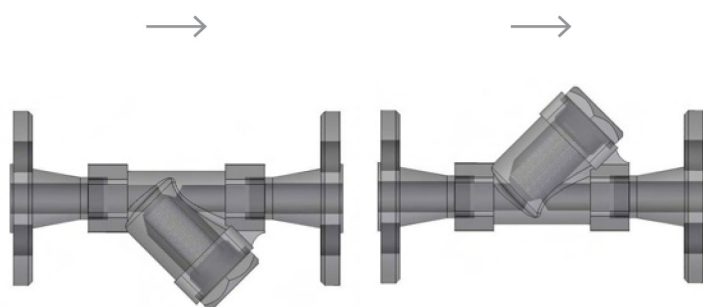
Designed according to ANSI B16.34 strainer bodies are produced with a higher wall thickness to increase corrosion allowance.

Standard strainers are equipped with screens for the average service of most fluids (steam, gas, air, oil, chemicals, ect.).

A large screen open area ensures an efficient filtering action with a low pressure drop.

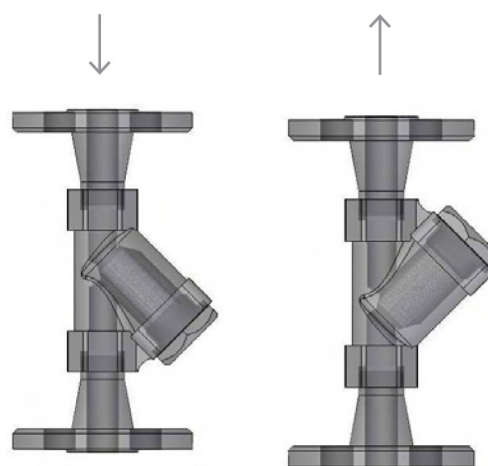
Filtering area to inlet area ratio is higher than 3 to 1.

Screens area is manufactured with perforated plate in the materials and with the perforation specified in the relevant tables. Screens with different perforation (or wire mesh) and materials can be manufactured on request.



**CORRECT**

**WRONG**

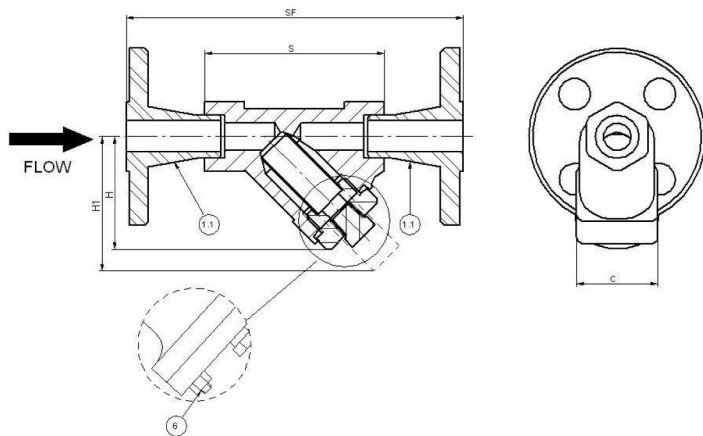


**CORRECT**

**WRONG**

All strainers should be mounted as close as possible to the valve or machinery they are installed to protect. It is important to ensure that the strainer is installed with the flow following the same direction of the flow direction arrow cast on the strainer body.

In horizontal or inclined pipelines, ensure that the screen housing is always mounted below the pipeline. In vertical pipelines " Y " - strainers should never be installed in upward flow condition.



**LIMITING CONDITIONS YSF800 (according to ISO 6552):**

According to the body rating (ANSI B 16.34)  
 F800 -ANSI 800.  
 OTHER RATINGS ON REQUEST

**CONNECTIONS**

Screwed                   ANSI B1.20.1 (NPT) / BS21 (BSP)  
 Buttweld                ASME B 16.25  
 Socket Welding       ANSI B16.11  
 Flanged                 ANSI / UNI / DIN

POS.	DESCRIPTION	MATERIALS		SPARES
1	Body	ASTM A105N	ASTM A182 F316	
1.1	Flange	ASTM A105N	ASTM A182 F316	
2	Screen	SS 316	SS 316	X
3	Plug	ASTM A105N	ASTM A182 F316	
4	Gasket	316 / GRAPHITE	316 / GRAPHITE	X
5	Drain plug	ASTM A105N	ASTM A182 F316	
6	Bolting	ASTM A193 B7/A 194 2H	ASTM A320 L7/ASTM A194 2Gr.4	

POS.6 (BOLTED COVER) : F800 2" ONLY  
 OTHER MATERIALS ON REQUEST

**Flanged**

Size (inches)	DRAIN PLUG	S	H	H1	C	Weight (kg)	UNI-DIN PN16-25-40		150#		300#		600#	
							SF	Kg	SF	Kg	SF	Kg	SF	Kg
3/8"	1/4"	90	60	85	41	1	-	-	-	-	-	-	-	-
1/2"	1/4"	90	60	85	41	1	150	2.6	165	2.3	165	2.8	165	3.2
3/4"	1/4"	110	75	100	46	1.2	170	4	191	3.2	191	4.3	191	4.7
1"	1/4"	130	93	140	56	2	200	4.4	216	4.2	216	5.3	216	5.8
1 1/2"	1/4"	180	144	200	85	6	240	11	241	9.7	241	15	241	12.9
2"	1/2"	185	140	200	100	7	230	13	292	12	292	15	292	16.3
2 1/2"	1/2"	185	140	200	100	7			282	16	294	18	308	20

STANDARD PERFORATIONS 0.8mm  
 SPECIAL PERFORATIONS ON REQUEST  
 Dimensions : S, H, H1, C, SF are in millimeters (mm)

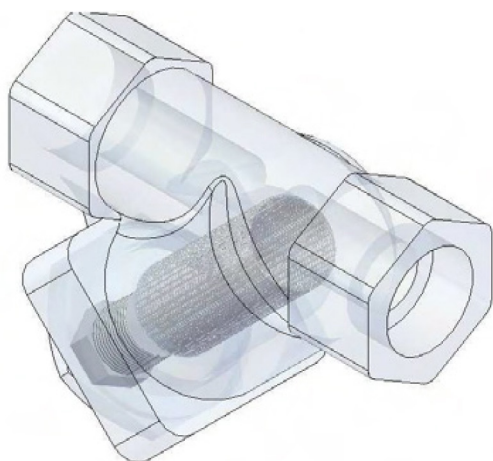
**HOW TO SERVICE**

Strainer maintenance should be made at least once a year, or whenever the pressure drop is higher than normal figures. A quick clean-up system, to be performed approximately once a month, is to blow off small impurities through the drain-plug (5). It is recommended to install a drain valve on a nipple to the drain hole to speed-up this operation. For a complete maintenance follow the points here below: **1-** Be sure that the main line has been shut off. **2-** Remove cover (3) and gasket (4). **3-** Remove screen (2) and carefully inspect it for damages. If any hole in the screen is clogged up, clean it with compressed air and / or any suitable tool. If the screen is broken in any part or out of shape, replace it with a new spare one. **Never reinstall a broken, bent or deformed screen.** **4-** Carefully clean the inside of the strainer body. **5-** Fit a new gasket (4). **6-** Install the new screen or the cleaned one (2). Be sure to center the screen in the upper seat. **7-** Put cover in place (3). Be sure that drain plug (5) is closed. **8-** Slowly give pressure to the line, checking for leakages. **9-** Write on the strainer body the date of this maintenance operation.

# FORGED STEEL "Y" PAP

## YSF1500

Y-type strainer, forged, class 1500



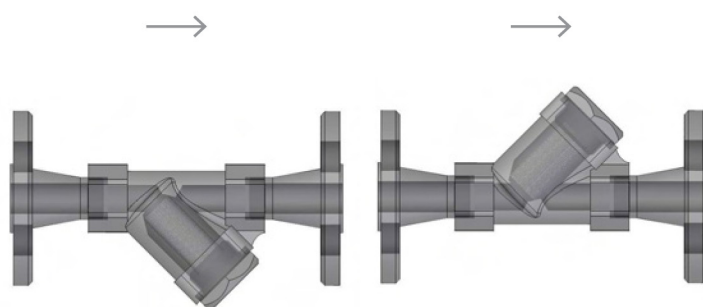
Designed according to ANSI B16.34 strainer bodies are produced with a higher wall thickness to increase corrosion allowance.

Standard strainers are equipped with screens for the average service of most fluids (steam, gas, air, oil, chemicals, ect.).

A large screen open area ensures an efficient filtering action with a low pressure drop.

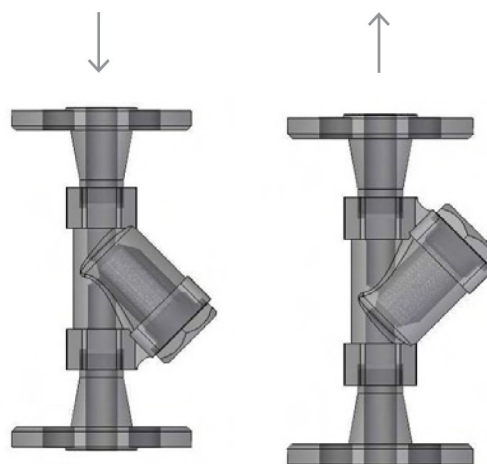
Filtering area to inlet area ratio is higher than 3 to 1.

Screens area is manufactured with perforated plate in the materials and with the perforation specified in the relevant tables. Screens with different perforation (or wire mesh) and materials can be manufactured on request.



**CORRECT**

**WRONG**

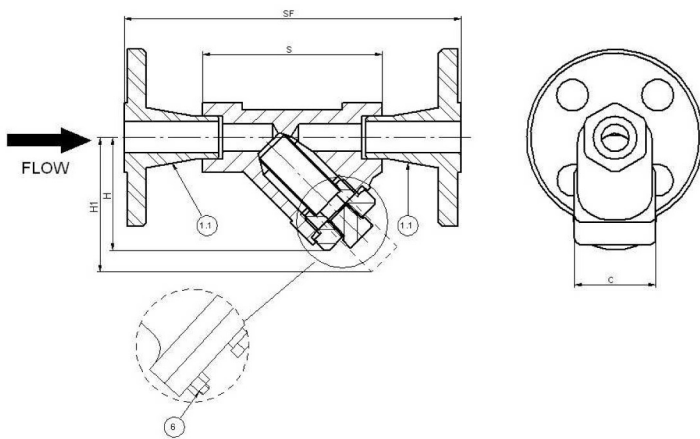


**CORRECT**

**WRONG**

All strainers should be mounted as close as possible to the valve or machinery they are installed to protect. It is important to ensure that the strainer is installed with the flow following the same direction of the flow direction arrow cast on the strainer body.

In horizontal or inclined pipelines, ensure that the screen housing is always mounted below the pipeline. In vertical pipelines " Y " - strainers should never be installed in upward flow condition.



**LIMITING CONDITIONS YSF800 (according to ISO 6552):**

According to the body rating (ANSI B 16.34)  
F1500 - ANSI 1500.

**CONNECTIONS**

Screwed	ANSI B1.20.1 (NPT) / BS21 (BSP)
Buttweld	ASME B 16.25
Socket	Welding ANSI B16.11
Flanged	ANSI / UNI / DIN

POS.	DESCRIPTION	MATERIALS		SPARES
1	Body	ASTM A105N	ASTM A182 F316	
1.1	Flange	ASTM A105N	ASTM A182 F316	
2	Screen	SS 316	SS 316	X
3	Plug	ASTM A105N	ASTM A182 F316	
4	Gasket	316 / GRAPHITE	316 / GRAPHITE	X
5	Drain plug	ASTM A105N	ASTM A182 F316	
6	Bolting	ASTM A193 B7/A 194 2H	ASTM A320 L7/ASTM A194 2Gr.4	

POS.6 (BOLTED COVER) : F1500 1/2" ONLY  
OTHER MATERIALS ON REQUEST

**Flanged**

Size (inches)	DRAIN PLUG	S	H	H1	C	Weight (kg)	1500# SF	Kg
1/2"	1/4"	110	75	100	46	1.4	216	5.5
3/4"	1/4"	130	93	140	56	2.2	229	7
1"	1/4"	180	144	200	85	6.2	254	13
1 1/2"	1/2"	185	140	200	100	7.5	305	19

STANDARD PERFORATIONS 0.8mm  
SPECIAL PERFORATIONS ON REQUEST  
Dimension : S, H, H1, C, SF are in millimeters (mm)

**HOW TO SERVICE**

Strainer maintenance should be made at least once a year, or whenever the pressure drop is higher than normal figures. A quick clean-up system, to perform approximately once a month, is to blow off small impurities through the drain-plug (5). It is recommended to install a drain valve on a nipple to the drain hole to speed-up this operation. For a complete maintenance follow the points herebelow: **1-** Be sure that the main line has been shut off. **2-** Remove cover (3) and gasket (4). **3-** Remove screen (2) and carefully inspect it for damages. If any hole in the screen is clogged up, clean it with compressed air and / or any suitable tool. If the screen is broken in any part or out of shape, replace it with a new spare one. **Never reinstall a broken, bent or deformed screen.** **4-** Carefully clean the inside of the strainer body. **5-** Fit a new gasket (4). **6-** Install the new screen or the cleaned one (2). Be sure to center the screen in the upper seat. **7-** Put cover in place (3). Be sure that drain plug (5) is closed. **8-** Slowly give pressure to the line, checking for leakages. **9-** Write on the strainer body the date of this maintenance operation.