

Block and Bleed Valves Coding:

Example-1): PAP -DB-D11 - F 8 R1 N 8 - P -SS
 1 3 4 5 3 4 6 7

Example-2): PAP -DB-D11 - FB - F 8 R3- P -SS
 1 2 3 4 5 6 7

1. Valve Series

SERIES IDENTIFY				1ts ISOLATE	2ts ISOLATE	VENT
SB	SINGLE BLOCK & BLEED VALVES	S1	1	BALL	-	NEEDLE
		S1	2	BALL	-	OS & Y
		S1	3	BALL	-	BALL
		S2	1	OS & Y	-	OS & Y
		S2	2	OS & Y	-	NEEDLE
		S2	3	NEEDLE	-	NEEDLE
DB	DOUBLE BLOCK & BLEED VALVES	D1	1	BALL	BALL	NEEDLE
		D1	2	BALL	BALL	OS & Y
		D1	3	BALL	BALL	BALL
		D1	4	BALL	NEEDLE	NEEDLE
		D1	5	BALL	BALL	-
		D1	6	BALL	NEEDLE	-
		D2	1	OS & Y	OS & Y	OS & Y
		D2	2	OS & Y	OS & Y	NEEDLE
		D2	3	OS & Y	NEEDLE	NEEDLE
		D2	4	NEEDLE	NEEDLE	NEEDLE

2. Bore size (mm)
 (STD) - 10mm (standard)
 15- 15mm
 RB- Reducer Bore
 FB- Full Bore

3. Connection type
 F- RAISED FACE FLANGE
 J- RING JOINT FLANGE
 N- FEMALE NPT
 M- MALE NPT
 FF- FLAT FACE FLANGE
 BW- BUTT WELD
 SW- SOCKET WELD

4. Connection size (inch)
 4- 1/4" 16- 1"
 6- 3/8" 24- 1 1/2"
 8- 1/2" 32- 2"
 12- 3/4"

5. Flange rating (class)
 R1- 150 R4- 900
 R2- 300 R5- 1500
 R3- 600 R6- 2500

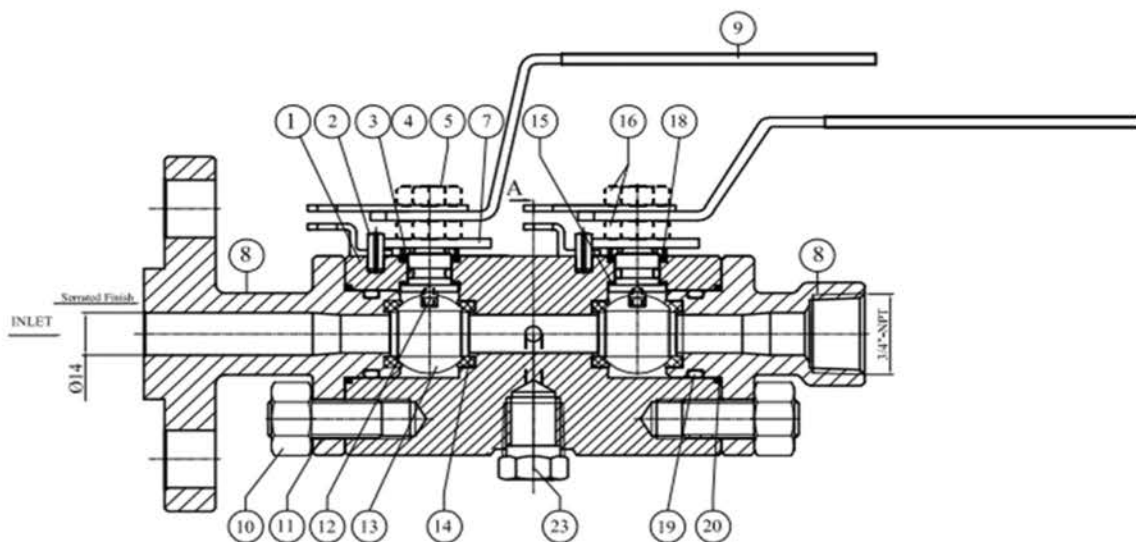
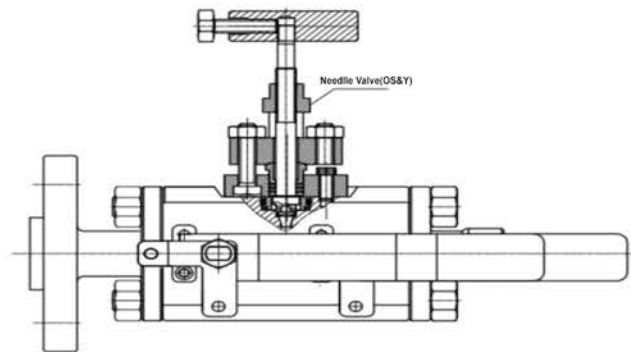
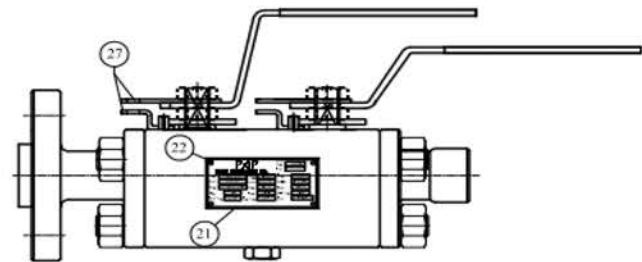
6. Ball seat material
 RP- R. PTFE
 P- PTFE

7. Body material
 SS- ASTM A182 GR 316L
 105- ASTM A105
 LF2- ASTM A350 LF2

- Reduced or full port
- Construction: B.B, OS & Y
- Socket Welding & Threaded ends
- Material for hard trim is Depend on Client notice & Operating Condition



Materials of Construction			
Row	PART NAME	Row	PART NAME
1	Body	14	Seat
2	Stop Pin	15	Thrust Washer
3	Steam O-Ring	16	Stem Nut
4	Ring	18	Stem Gasket
5	Stem	19	Bonnet O-ring
7	Indicator	20	Body Gasket
8	Closure	21	Name Plate
9	Wrench	22	Pin
10	Body Nut	23	Hex Plug 1/4 NPT
11	Body Stud Bolt	24	Needle Valve (Type 3)
12	Spring	27	Locking Device
13	Ball		

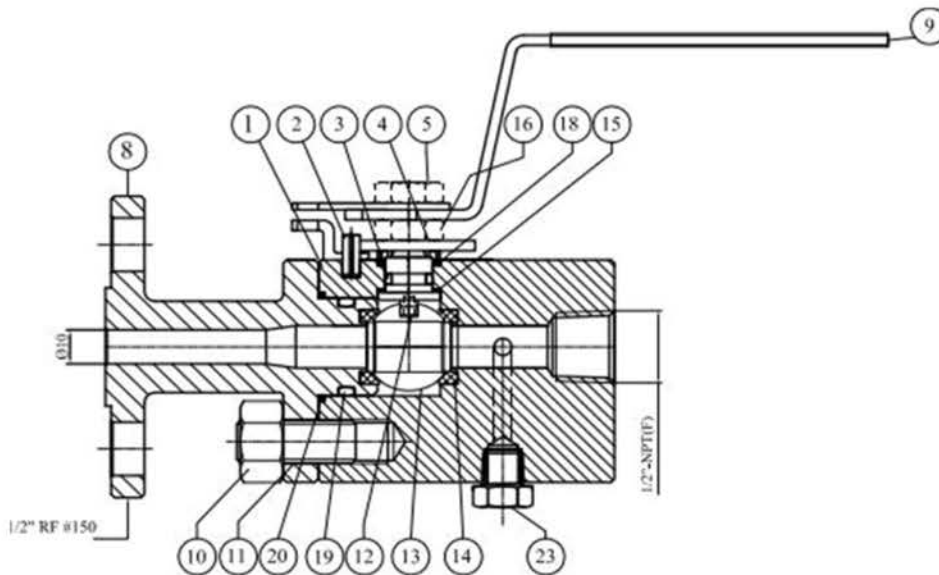
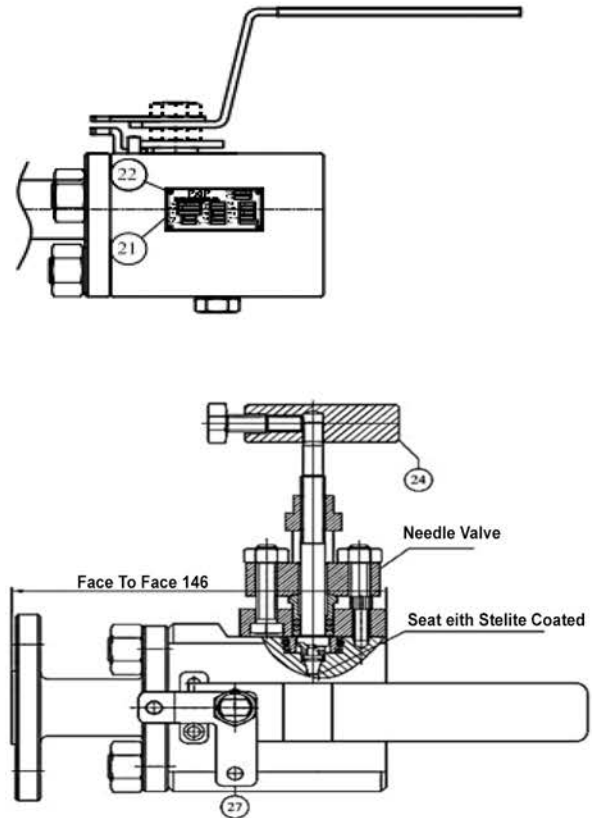


- Reduced or full port
- Construction: B.B, OS & Y
- Socket Welding & Threaded ends
- Material for hard trim is Depend on Client notice & Operating Condition



Materials of Construction

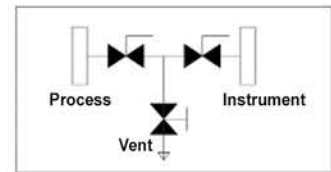
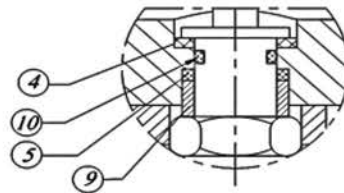
Row	PART NAME	Row	PART NAME
1	Body	14	Seat
2	Stop Pin	15	Thrust Washer
3	Steam O-Ring	16	Stem Nut
4	Ring	18	Stem Gasket
5	Stem	19	Bonnet O-ring
7	Indicator	20	Body Gasket
8	Closure	21	Name Plate
9	Wrench	22	Pin
10	Body Nut	23	Hex Plug 1/4 NPT
11	Body Stud Bolt	24	Needle Valve (Type 3)
12	Spring	27	Locking Device
13	Ball		



- ASME B 16.5
- FACE CONDITION 125-250 AARH
- WRENCH OPERATION
- BALL ARRANGEMENT: FLOATING
- ANTI-BLOWOUT BECAUSE OF BODY AND STEM CONDITION



Bill of Material		
1	BODY	A105N
2	BALL	S.S 316
3	SEAT	PTFE
4	THRUST BEARING	PTFE
5	STEM PACKING	PTFE
6	STEM	S.S 316L
7	NUT	S.S 304
8	HANDEL (STOPPER)	C.S
9	GLAND	S.S 316L
10	O-RING	VITON
11	BODY SEAL	PTFE
12	BONNET	A105N
13	BOLT/NUT	A194-GR2HM/A193 GR.B7M
14	OS & Y	SEAT:17-4PH BONNET: A182 F316L SEAL: PTFE
15	PLUG	A105L
16	FLANGE	A105L
17	STOP PIN	S.S 316L
18	LOCKING DEVICE	S.S
19	RETAINER SEAL	PTFE
20	SEAT RETAINER	S.S 316L



Detail A

